

ONE MACHINE. MULTIPLE LIVES.

CAT® CERTIFIED REBUILD PROGRAM



Carter



**LET'S GET
TO WORK.®**



CHOOSING CAT EQUIPMENT WAS A **SMART** INVESTMENT. NOW, MAKE THE **MOST** OF IT.



WHEN YOU CHOOSE CATERPILLAR, YOU GET EQUIPMENT AND COMPONENTS THAT ARE BUILT TO PERFORM NOT FOR ONE LIFETIME, BUT FOR MULTIPLE LIFETIMES. **DON'T LET THAT EXTRA VALUE GO TO WASTE.** TAKE ADVANTAGE OF THE CAT® CERTIFIED REBUILD PROGRAM AND RETURN YOUR END-OF-LIFE MACHINES, SYSTEMS AND COMPONENTS TO LIKE-NEW CONDITION—AT A FRACTION OF THE COST OF BUYING NEW.

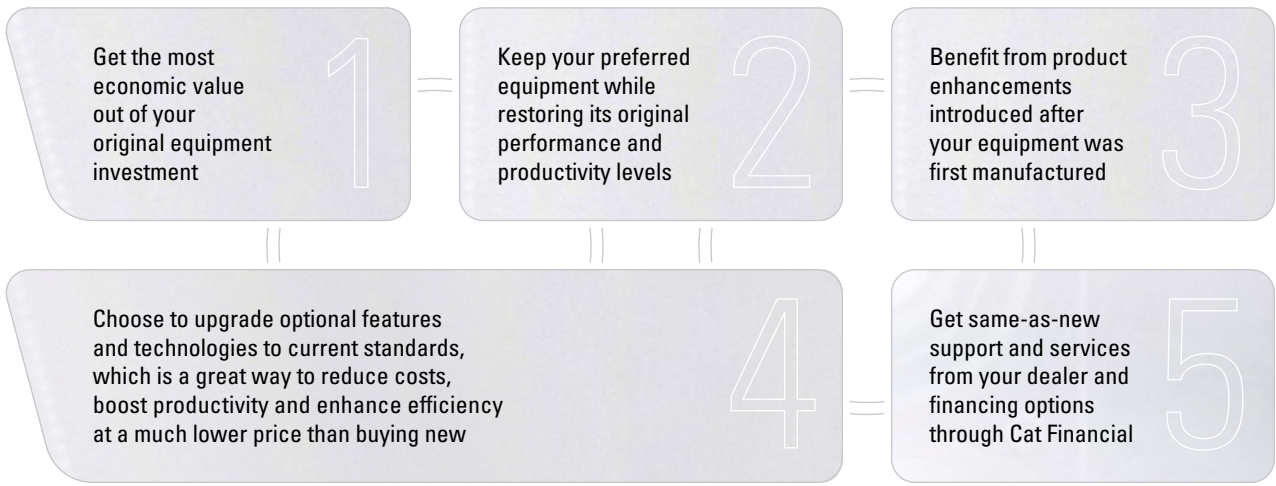
www.CarterMachinery.com/RebuildProgram





WHY REBUILD

FIVE REASONS TO REBUILD



FROM SINGLE COMPONENT TO COMPLETE MACHINE OPTIONS, WE'VE GOT YOU COVERED.

www.CarterMachinery.com/RebuildProgram

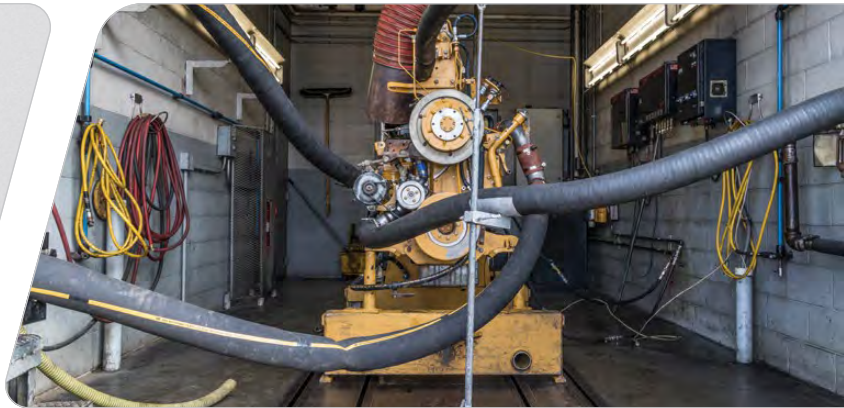
REBUILD MACHINE

Returns your entire machine to good-as-new condition—or better-than-new condition with upgrades and enhancements



REBUILD POWER TRAIN

Restores everything from the radiator to the axles, bringing them back to new life



REBUILD POWER TRAIN PLUS

Reconditions your power train plus any other area of your machine, such as the mainframe, hydraulics, undercarriage and more*

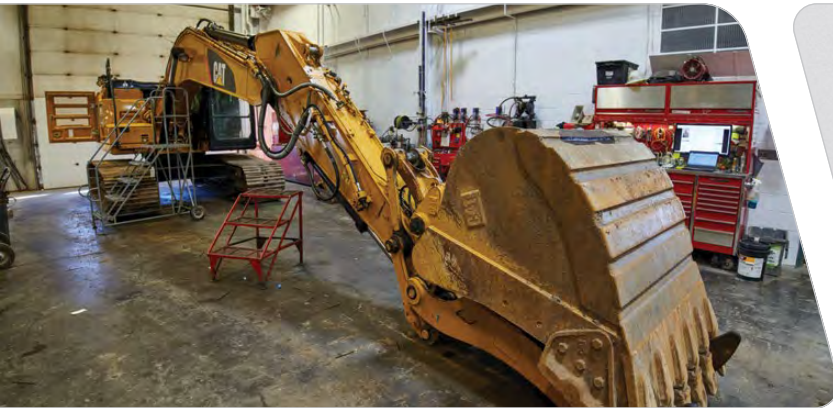


CHOOSE THE CAT CERTIFIED REBUILD
PROGRAM OPTION THAT **BEST FITS** YOUR
EQUIPMENT AND BUSINESS NEEDS.



REBUILD **COMMERCIAL ENGINE**

Maximizes the durability and performance of Cat commercial and industrial engines, including marine propulsion engines, generator sets, pumps, locomotives and other power systems



REBUILD **HYDRAULIC**

Restores like-new performance to your excavator's hydraulic system



REBUILD **MACHINE COMPONENT**

Breathes new life into individual components like Cat machine engines, transmissions, torque converters, axle assemblies or final drives

WE SET HIGH STANDARDS TO MEET YOUR HIGH EXPECTATIONS.

RETURNING A MACHINE, POWER TRAIN, ENGINE, HYDRAULIC SYSTEM OR KEY COMPONENT TO LIKE-NEW CONDITION IS AN EXTENSIVE PROCESS THAT REQUIRES TRAINED PROFESSIONALS, SPECIALIZED EQUIPMENT, STRINGENT QUALITY CONTROL AND ACCESS TO THE LATEST ENGINEERING UPDATES. ONLY THE **GLOBAL CAT DEALER NETWORK** IS CAPABLE OF PERFORMING HIGHLY SOPHISTICATED CAT CERTIFIED REBUILDS, AND NO MATTER WHERE YOU GO IN THE WORLD, YOU'LL FIND THE WORK COMPLETED TO A CONSISTENT STANDARD OF EXCELLENCE.

www.CarterMachinery.com/RebuildProgram



THE CAT CERTIFIED REBUILT PROGRAM

**WHAT SETS THE CAT
CERTIFIED REBUILD
PROGRAM APART**



THOROUGH EVALUATIONS

A complete machine rebuild includes more than 350 tests and inspections

1

AUTOMATIC REPLACEMENT OF PARTS THAT DON'T MEET STRICT REUSABILITY GUIDELINES

For a machine rebuild, that amounts to approximately 7,000 parts

2

RECONDITIONING WORK TYPICALLY NOT INCLUDED IN AN OVERHAUL

Examples include reconditioning frame, replacing electronic control modules, wiring harness and updating software

3

PERFORMANCE TESTING

Turbocharger boost, throttle response, stall speed rpm, transmission and steering clutch response, and hydraulic and pilot relief valve pressure tests are standard for machine and power train rebuilds

4

NEW PRODUCT IDENTIFICATION NUMBER AVAILABLE ON FULL MACHINE AND COMMERCIAL ENGINE REBUILDS

A new Product Identification Number (PIN) entitles your rebuilt machine to a like-new standard warranty

5

YOU'RE NOT JUST ADDING LIFE. YOU'RE ALSO ADDING VALUE.

DID YOU KNOW CAT CERTIFIED REBUILD MACHINES TEND TO CAPTURE **SIGNIFICANTLY HIGHER RESALE VALUE**? THAT'S BECAUSE THEY'RE REBUILT TO A STRICT SET OF STANDARDS REQUIRED BY CATERPILLAR, THEN UPDATED, SERVICED AND SUPPORTED TO A HIGHER LEVEL THAN OTHER REBUILD PROGRAMS.



www.CarterMachinery.com/RebuildProgram

COVERAGE OPTIONS

NEW WARRANTY, EXTENDED COVERAGE

Every Cat Certified Rebuild includes a new parts warranty on all replaced parts, and you can add an optional **Equipment Protection Plan (EPP)*** to protect your machine, power train, commercial engine or machine component rebuild.

**1-YEAR
COVERAGE**

**2-YEAR
COVERAGE**

**3-YEAR
COVERAGE**

WITH VARIABLE **SERVICE HOURS** TO MEET YOUR NEEDS

*Coverage differs by country.
Additional coverage terms are available.

UPGRADES & RETROFITS

YESTERDAY'S MACHINE, TODAY'S STANDARDS

We constantly update Cat equipment to improve performance, efficiency, comfort, safety and serviceability. Some features may not have been available when you first acquired your machine, and some you may have opted not to purchase. With Cat Certified Rebuild programs, you not only get many engineering updates, but you also get the choice to **upgrade or retrofit** with new features and options available on today's models. It's an affordable way to enhance your machine even further while it's already in the shop for a rebuild with no additional downtime required.



SERVICES

LIKE-NEW SUPPORT

Your local **Cat dealer** has the parts, service and expertise to keep your rebuilt machine, power train, commercial engine, hydraulic system or machine component on the job. Financing for rebuilds is also available through your dealer and Cat Financial.



AVAILABILITY

ELIGIBLE MACHINES

ARTICULATED TRUCKS

725, 730, 735,
740, 745



COMPACTORS

815, 816, 825,
826, 836



ENGINES

3056, 3116, 3126, 3176, 3304, 3306, 3406, 3408, 3412, 3456, 3508, 3512, 3516,
3606, 3608, 3612, 3616, 3618, C2.2, C4.4, C6.6, C7, C7.1, C9, C10, C11, C12,
C13, C15, C16, C18, C27, C32, C175-16, G3304, G3306, G3406, G3408, G3412,
G3508, G3512, G3516, G3520, G3606, G3608, G3612, G3616, PM3516



HYDRAULIC EXCAVATORS

245, 312, 318, 319, 320, 322, 323, 324, 325, 328, 329, 330, 332,
336, 345, 349, 350, 365, 374, 375, 385, 390, 568, 5080, 5110,
5130, 5230, M315, M316, M318, M320, M322, M325



INTEGRATED TOOLCARRIERS

IT62

MOTOR GRADERS

12, 14, 16, 24, 120, 130,
135, 140, 143, 160, 163



OFF-HIGHWAY TRUCKS

769, 770, 771, 772, 773, 775, 776,
777, 785, 789, 793, 795, 797



TRACK SKIDDERS

517, 518, 527

TRACK-TYPE LOADERS

933, 939, 953, 963, 973, 977



**TRACK-TYPE
PIPELAYERS**

561, 572, 578,
583, 589

TRACK-TYPE TRACTORS

D5, D6, D7, D8, D9, D10, D11



**UNDERGROUND
MINING LOADERS**

R1300, R1600, R1700,
R2900, R3000



**UNDERGROUND
MINING TRUCKS**

AD30, AD45, AD55,
AD60, AE40

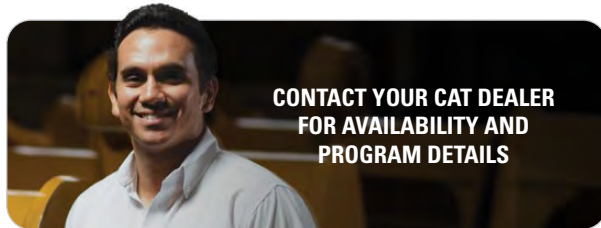


**WELL STIMULATION
PUMP TRAILERS**

SPF343

WHEEL DOZERS

814, 824, 834, 844, 854



WHEEL EXCAVATORS

M315, M316, M318,
M322, M325



WHEEL LOADERS

914, 916, 924, 926, 928, 930, 936, 938, 939,
950, 960, 962, 966, 970, 972, 980, 982, 986,
988, 990, 992, 993, 994



WHEEL SKIDDERS

515, 518, 525,
535, 545, 555



WHEEL TRACTOR SCRAPERS

613, 615, 621, 623, 627,
631, 633, 637, 651, 657



www.CarterMachinery.com/RebuildProgram

Carter



**LET'S GET
TO WORK.®**