

PARTS.CAT.COM

ALL THE CAT® PARTS YOU NEED. ALL IN ONE PLACE.



SPEND LESS TIME AT THE STORE AND MORE TIME ON THE JOB

FEATURES

- » Instant access to any of Cat's 1.4 million part numbers
- » Pricing, availability, and ability to purchase parts from any dealer
- » New, reman, classic, used, and yellowmark part options displayed
- » Access to SIS and parts manual service information

BENEFITS

- » Real time price and availability
- » 24/7 access to place orders
- » Mobile device friendly
- » Previous Parts.Cat.com sales history

Visit today. www.Parts.Cat.com
Questions? Email ShopTalkChannel@cartermachinery.com

Carter

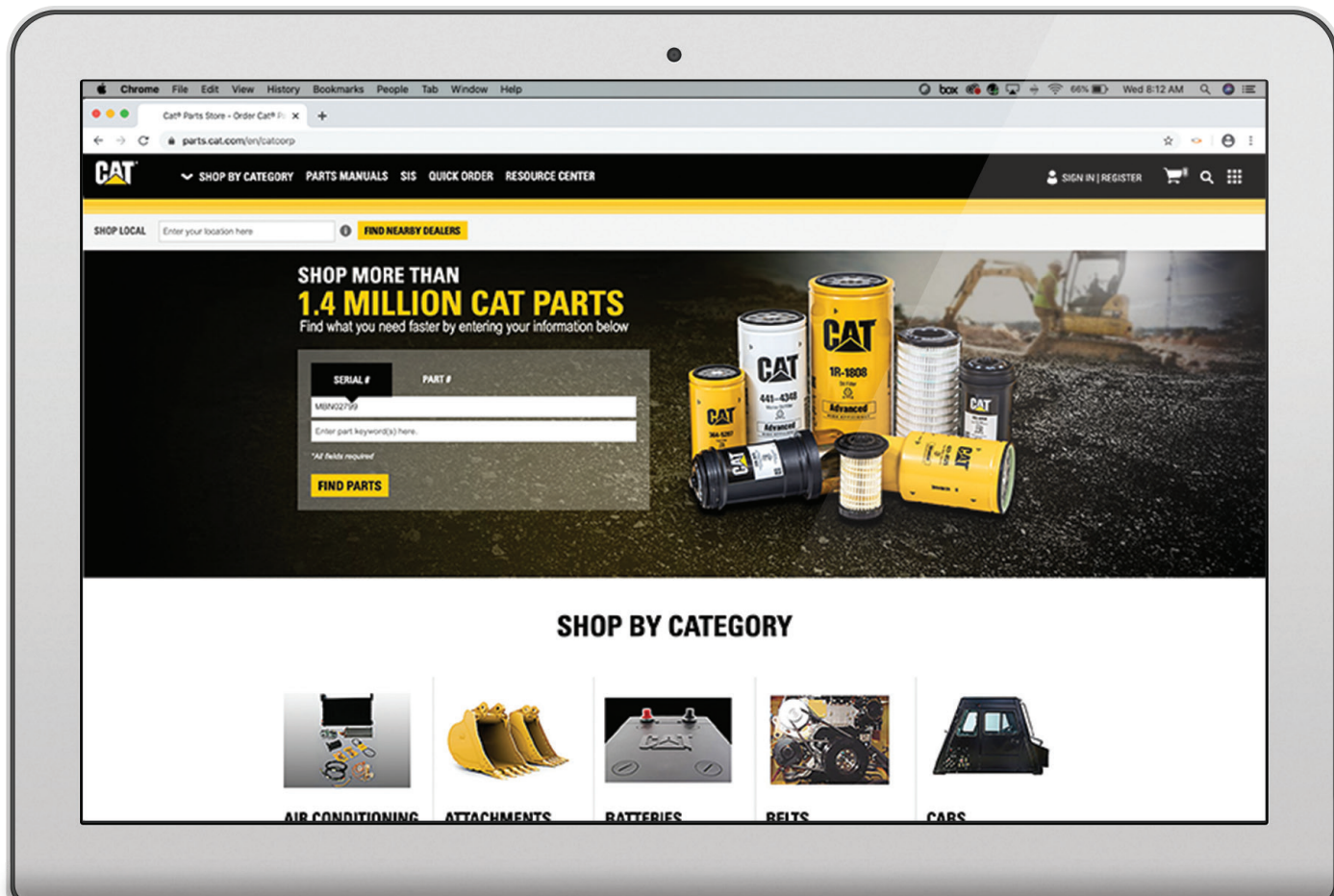


**LET'S GET
TO WORK.®**

HOW TO REGISTER FOR PARTS.CAT.COM

- » Go to Parts.Cat.com and click Sign In/Register
- » Create Account
- » Enter your location (City, State)
- » Select the location the best fits your needs
- » Fill out the customer information form
 - If you need assistance with obtaining your customer number email ShopTalkChannel@CarterMachinery.com
- » Accept the Terms & Conditions
- » Complete your registration*

*A confirmation email will be sent to you letting you know registration was successful!



Visit today. www.Parts.Cat.com
Questions? Email ShopTalkChannel@cartermachinery.com



LET'S GET
TO WORK.®